

Hilti
PS 200
Ferrosan
PS 1000 X-Scan
detection systems

HILTI

Hilti
PS 200
Ferrosan
PS 1000 X-Scan
detection systems

HILTI

Hilti
PS 200
Ferrosan
PS 1000 X-Scan
detection systems

HILTI

Inside insight.



Detection systems

Ordering designation	Item no.
PS 200 Ferrosan system with PS 200 Scanner, PS 200 M monitor, memory card, headset, 2 battery packs, 2 AC adapters, reference grids, data cable, PC software; packed in a Hilti toolbox	① 000000
PS 200 S scanner with battery pack	② 000000
PS 1000-B X-Scan with 2 battery packs, AC adapter, reference grids; packed in a Hilti toolbox	③ 2007219
PS 1000 X-Scan with 2 battery packs, AC adapter, reference grids, memory card, PC software; packed in a Hilti toolbox	④ 2007501
PS 1000 X-Scan system with PSA 100 monitor, 3 battery packs and 2 AC adapters, connecting cable for data transfer, reference grids, memory card, PC software; packed in a wheeled Hilti toolbox	⑤ 2007503



Accessories

	PS 200	PS 1000	
PSA 75 brush	■	■	2013776
PUA 90 adhesive tape	■	■	319362
PUA 70 marking pens, 12 pcs	■	■	340806
PSA 92 data cable for data transfer between the monitor and PC	■	■	305142
PSA 93 headset for voice recording with the monitor	■	■	305143
PSA 91 memory card MMC card (for monitor, item no. 319281)	■	■	305141
PSA 94 memory card SD card (for monitor, item no. 031225)	■	■	319911
PSA 10 reference grid, in mm	■	■	377654
PSA 80 battery pack for scanner or monitor	■	■	377472
PUA 80 AC adapter for the PSA 80 battery pack	■	■	000000
PSA 100 monitor with soft case, battery pack and AC adapter	■	■	2006082
PSA 12 reference grid, in mm	■	■	2006083
PSA 14 reference grid, in mm	■	■	2006085
PUA 81 AC adapter for PSA 81 and PSA 82 batteries	■	■	2006089
PSA 85 battery charger for PSA 82 battery pack	■	■	2006183
PUA 82 motor vehicle power adapter for PSA 81, PSA 100	■	■	2006180
PSA 81 battery pack for PS 1000 X-Scan	■	■	2006182
PSA 82 battery pack for PSA 100 monitor	■	■	2006183
PSA 95 memory card	■	■	2006184
PSA 50 connecting cable, 2 m, for data transfer PS 1000 - PSA 100	■	■	2006185
PSA 51 connecting cable, 10 m, for data transfer PS 1000 - PSA 100	■	■	2006186
PSA 70 extension for PS 1000 X-Scan	■	■	2006199
PSA 65 carrying device for the PSA 100 monitor	■	■	2006200
PS 1000 toolbox	■	■	2006188
PS 1000 system toolbox	■	■	2006201

Great services - the choice is yours.



We manage your tools.
So you can manage your business.



Outstanding services for a product lifetime.
The unique service package for those who prefer to own their tools.



Regular checks for reliable results.

Hilti. Outperform. Outlast.

Hilti Aktiengesellschaft | 9494 Schaan | Liechtenstein | T +423-234 2111 | F +423-234 2965 | www.hilti.com

Hilti - eingetragenes Warenzeichen der Hilti AG, Schaan | W 403011010-0-de | 2 | Printed in Liechtenstein | © 2010 | Technische und Programm-Änderungen vorbehalten | S. E. & O.

Inside insight.

Hilti. Outperform. Outlast.

Get a visible handle on rebar.



Rebar detection and verification for acceptance inspections, changes of building use or post-installed rebar connections.

Measurement of depth of concrete cover for acceptance inspections, renovation work and quality checks.

Applications

- Rebar verification and analysis
- Checking concrete cover over large areas for acceptance inspections and structural repair work

Advantages

- Scans large areas of concrete quickly and easily
- Provides accurate depth of cover measurements for reinforcement at depths up to 100 mm
- Records scan data automatically over lengths of up to 30 meters
- Displays a clear 2D image of the reinforcement on the monitor for on-the-spot structural analysis and depth of cover assessment

Highlights

PC software for professional scan evaluation and data management

Hilti PROFIS Ferroskan:

- Subsequent data analysis on a PC
- Collective evaluation of several individual scans with the same parameters, use of various date formats, and much more
- Production of statistics and assessment reports

Hilti PROFIS Ferroskan MAP:

- Capable of combining multiple scans for visual presentation (in 2D/3D views)
- Provides a clear overview of areas up to 45 x 45 m

Take a quick look beneath the surface.

The Hilti PS 200 Ferroskan system provides a non-destructive means of locating reinforcing bars and measuring their depth of concrete cover. This complete, easy-to-use cordless detection system, consisting of a scanner, monitor and PC software can also estimate the diameter of rebars found. Employing the induction principle, the scanner locates rebars accurately and reliably within concrete structures. The results of scans are displayed on the portable monitor unit as easily interpretable 2D-images. Scan data is recorded and can be transferred to a PC for further analysis, creation of assessment reports and for archival purposes.



Imagescan

- Scans large areas of concrete in a grid pattern
- Locates rebars at depths of up to 160 mm
- Produces clear, easily interpretable 2D images of the layout, for measurement of depth of concrete cover and for estimation of rebar diameter
- Multiple Imagescans can be combined for large-area analysis using the PC application

Quickscan Detektion

- Quickly measures the depth of cover over reinforcing bars located at depths of up to 100 mm, allowing their positions to be marked directly on the concrete surface

Quickscan recording

- Scans long stretches of up to 30 m in length, quickly and easily
- Records and evaluates the data automatically while indicating the average depth of cover, the number of bars found and the standard deviation
- Multiple Quickscans can be combined for large-area analysis using the PC application



Imagescan

- Scans large areas of concrete in a grid pattern
- Locates metal and plastic pipes as well as electric cables and conduits at depths of up to 300 mm in dry concrete
- Detects objects located behind reinforcing mesh
- Shows objects in a 2D or 3D plan view and cross-sectional view for immediate analysis

Quickscan Detektion

- Quickly locates various objects in concrete, allowing their positions to be marked directly on the working surface

Quickscan recording

- Scans stretches of up to 10 m in length, quickly and easily
- Shows objects in 2D or 3D plan views and cross-sectional views
- Handy extension available for easy floor scanning

See for yourself, with real inside insight.

The Hilti PS 1000 X-Scan system detects reinforcing bars, pre- and post-tensioning tendons, metal pipes, plastic pipes, electric cables and glass-fiber cables in next to no time – even over large concrete areas. Equipped with three radar antennas, the PS 1000 scanner finds concealed objects at depths of up to 300 mm. Scan results are presented on the X-Scan display for immediate analysis or can be transferred to the PSA 100 monitor for further evaluation. Thanks to its ease of operation, on-site handling and the easily interpretable 3D images of concealed objects it produces, the Hilti PS 1000 X-Scan system simply takes non-destructive structural inspection into a new era.



Applications

- Non-destructive inspection and detection of concealed objects in steel-reinforced and prestressed concrete structures
- Detecting metal or plastic pipes and electric cables to avoid damage when drilling
- Locating rebars for post-installed rebar connections

Advantages

- Locates objects of various kinds in concrete structures, even beneath reinforcing mesh
- Displays a clear, real-time 2D image directly on the Hilti PS 1000 display
- Processed 2D and 3D plan view or cross-sectional images are displayed in color on the PSA 100 monitor unit for further on-the-spot evaluation of the data or printing

Highlights

X-Scan, because it's Xtra fast.

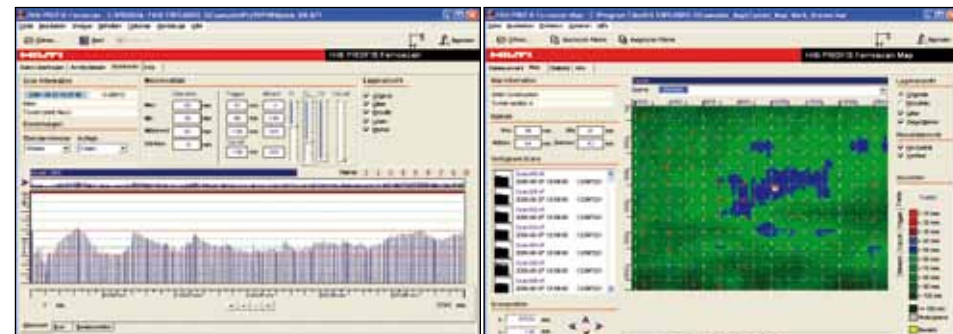
A compact, cordless system consisting of scanner, monitor and PC software. Quickly ready for use, easy to operate and featuring high memory capacity for clearly interpretable color images of the objects concealed in concrete structures, allowing immediate analysis.

Performance data

	PS 200 Ferroskan
Detection range	max. 160 mm, see op. instructions
Localization accuracy	± 3 mm, see op. instructions
Depth measurement accuracy	± 1 mm, see op. instructions
IP protection class	IP 54
Operating temperature range	-10 to + 50°C
Battery life, scanner / monitor	8 h / 8 h with NiMH battery pack
Dimensions / weight, scanner	260 x 132 x 132 mm / 1.4 kg
Dimensions / weight, monitor	264 x 152 x 57 mm / 1.4 kg



An Imagescan displayed on the monitor for on-the-spot analysis of reinforcement (location, depth, diameter).

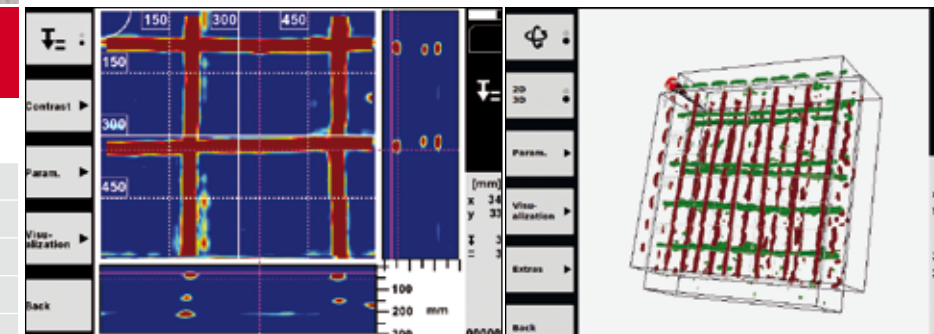


Quickscan data for analysis of depth of concrete cover, displayed using the Hilti PROFIS Ferroskan PC application.

Ferroskan MAP combines multiple scans in a large-area view showing where depth of cover is inadequate (with statistics).

The two systems compared

PS 200 Ferroskan		PS 1000 X-Scan
■	Locating reinforcing bars	■
■	Locating pre- and post-tensioning tendons	■
■	Locating cavities	■
■	Locating plastic pipes and electric cables	■
■	Measuring depth of concrete cover	■
■	Determining rebar diameter	■
■	Detecting objects in multiple layers	■
■	Estimating wall and slab thickness	■

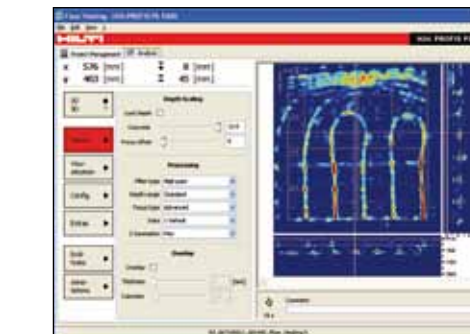


2D representation of an Imagescan shown as a plan view and cross-sectional views on the PS 1000 display.

3D Imagescan (plan views, cross-sectional views) for on-the-spot visualization and analysis on the PSA 100 monitor.

Performance data

	PS 1000 X-Scan
Detection range	max. 300 mm, see op. instructions
Localization accuracy	± 10 mm, see op. instructions
Depth measurement accuracy	± 10 mm, see op. instructions
IP protection class	IP 54
Operating temperature range	-10 to +50°C
Battery life, scanner / monitor	4 h / 2 h with Li-ion battery pack
Dimensions / weight, scanner	318 x 190 x 143 mm / 2.5 kg
Dimensions / weight, monitor	292 x 208 x 65 mm / 2.3 kg



Advanced software with comprehensive evaluation and analysis features for the creation of reports and documentation.

We reserve the right to make technical changes.