

Proceq GPR Live

The GPR for everyone



Proceq GPR Live – The most innovative ultra-wideband portable GPR for concrete testing

Proceq GPR Live is the beginning of a new era in NDT. The outstanding and unique ultra-wideband technology in structural building assessment combined with a compact wireless scan car delivers unmatched performance. The new Proceq GPR Live comes with the unique stepped-frequency continuous-wave (SFCW) technology delivering the widest frequency spectrum in the concrete assessment market. All applications typically addressed with multiple separate antennas in the range of 0.9 to 3.5 GHz can now be covered with a single device!



Proceq GPR Live combined with the telescopic rod with tablet holder



Proceq GPR Live covers all frequencies from 0.2 to 4.0 GHz with one single device. Lower frequencies allow deep penetration depths while higher frequencies allow for the detection of small objects.



Proceq GPR Live performing an area scan with the aid of a Proceq grid paper

Flexible product setup

Proceq GPR Live is a groundbreaking product that offers a wide selection of accessories to fit every user's needs, such as the on-device tablet holder for single-hand operation and the telescopic rod for accessing hard-to-reach areas. Unlike other GPR products, its flexible set-up allows the user to always have a large screen at an optimal viewing position with all controls within easy reach.



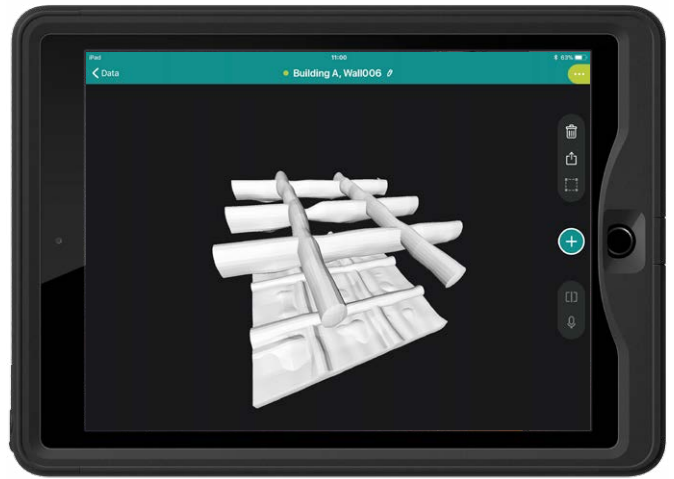
Proceq GPR Live combined with the device tablet holder

Largest display in the market

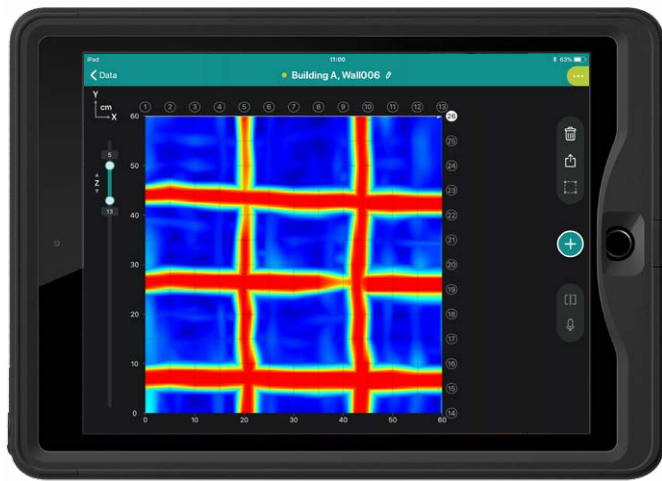
The Swiss Made Proceq GPR Live is wirelessly connected to the Proceq GPR Live app to any iPad. Thus, the Proceq GPR Live allows instant imaging on a high-resolution touchscreen of up to 12.9 inches (iPad Pro) which makes it the largest GPR display in the industry.

Unmatched connectivity

Digital reporting, data sharing, and back-up are possible directly from the Proceq GPR Live app and through highly secure cloud services. The unique Logbook feature records the key parameters associated with every test including settings, time stamps, photos, site notes, and geolocation. Reports can be sent directly from the iPad on-site.



Proceq GPR Live 3D view



Proceq GPR Live time-slice view



Intuitive app interface

The Proceq GPR Live app is intuitive and simple to use. The user interface offers many different live view settings that help to optimize on-site data acquisition and evaluation. A.I. functions, laser guidance, and the rollback cursor assist object tagging.

Measuring modes

- Area scan (60x60 cm / 24x24 in)
- Line scan

Review modes

- Non-migrated line scan
- Migrated line scan
- Time-slice view
- On-site 3D view (Pro and Unlimited versions only)
- Reporting software

Technical specifications

Measuring principle	Stepped-frequency continuous-wave GPR
Frequency range	0.2 to 4.0 GHz
Central frequency	2.4 GHz
Bandwidth	2.85 GHz
Maximum peak power	-7 dB EIRP
Max. depth range	70 cm / 28 inches on dry concrete
Dimensions	220 x 180 x 143 mm / 8.7 x 7.1 x 5.6 in
Weight	2 kg / 4.4 lb
Battery	8 x AA (alkaline or rechargeable)
Battery lifetime	3.5 hours of continuous use

Display	Any iPad
Operating temperature	-10 to 50 °C / 14 to 122 °F
Humidity	<95% RH, non-condensing
IP classification	IP54
Export (only Pro and Unlimited version)	Measurement (Proceq GPR Live app file), snapshot (JPG), chart (CSV)
Languages	English, German, Japanese, Chinese, Korean
Regional settings	Metric and Imperial units
Applied norms and standards	AASHTO R 37-04, ACI 228.2R.98, ASTM D4748-10, ASTM D6087-08, ASTM D6432-11, EN 302066 - ETSI