

CMX

LIGHT



CMX Light

Easy-to-use calibration software for a single workstation.

beamex

CMX Light

Calibration management made smart and simple.

Good calibration management software reduces your workload, because it carries out tasks for you faster, easier, and more accurately than you could do alone. That's what CMX Light is all about. It's calibration management software made smart and simple, with all the necessary functions that help you in planning, managing and documenting calibration work, as well as storing detailed information about each device.

CMX Light is easy-to-use calibration software for a single workstation. It is the calibration solution for all large and mid-sized companies that wish for advanced, yet simple to use, calibration software.



2

CMX Light's capabilities offer smart and simple calibration management:

- Implementation is quick and easy.
- Setup, use and manage all calibration data.
- No need to remember when to calibrate, CMX Light reminds you.
- Store all calibration information safely and efficiently.
- Automate calibration procedures.
- Minimize paperwork by producing paperless calibration documents.

92%

of CMX customers are either satisfied or very satisfied to the ease-of-use of Beamex products.*

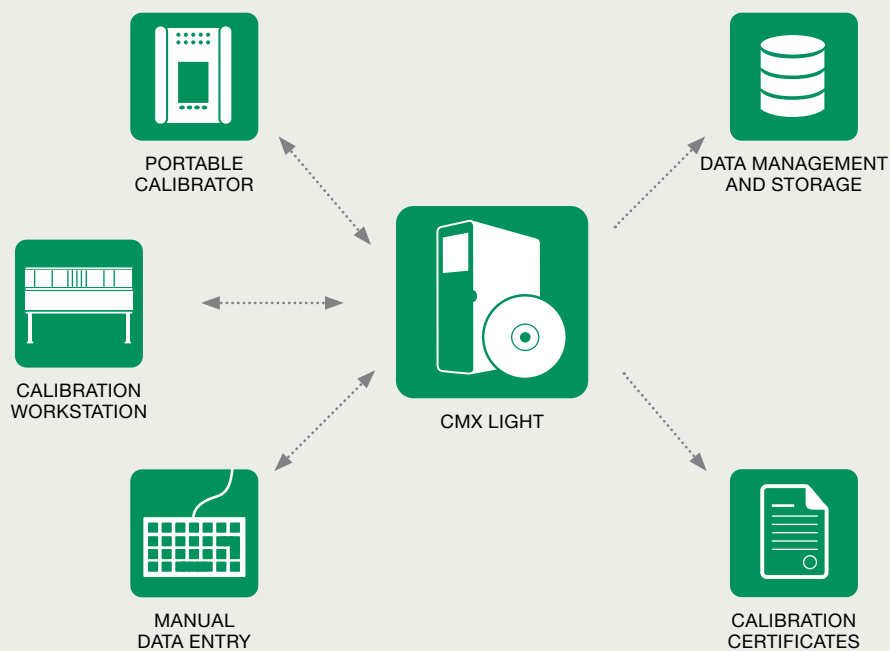
* Beamex Customer Survey 2006 (Dec 2006)

Manage all of the different calibration quantities with CMX Light:

- Pressure
- Temperature
- Electrical
- Indicators
- Recorders
- Mass
- pH
- Length
- Flow
- And many others...



CMX Light – the key ingredient for efficient calibration system



Upload calibration procedures from CMX Light to portable calibrators and calibration workstations.

Before performing any calibrations, you can upload all the calibration procedures that you need to do from CMX Light to your Beamex field calibrator or workstation. No need to carry any notepads with you.

Download calibration results from portable calibrators and calibration workstations back to CMX Light. When calibration has been completed, you can download all the calibration information and results from the calibrator back to CMX Light. It's fast and simple.

Manually enter calibration data into CMX Light. If you like, you can also manually enter calibration information into CMX Light. This way you can store and manage all possible calibration standards with CMX Light, no matter what you calibrate.

Create, manage and store calibration information safely and efficiently. All calibration data, procedures and results are stored and managed in the CMX database. The software reminds you what to do and when.

Print calibration certificates, reports and labels in electronic format, on paper or both; it's up to you.



Simple and easy to use

Explorer-like browser interface. The explorer-type user interface allows you to navigate through calibration records quickly and easily.

“Drag and drop” functionality. In CMX Light, you can move equipment by simply dragging and dropping it. In addition, workflows can be created by dragging and dropping equipment. This means that you can drag and drop work orders to your Beamex calibrator. No need for pen and paper.

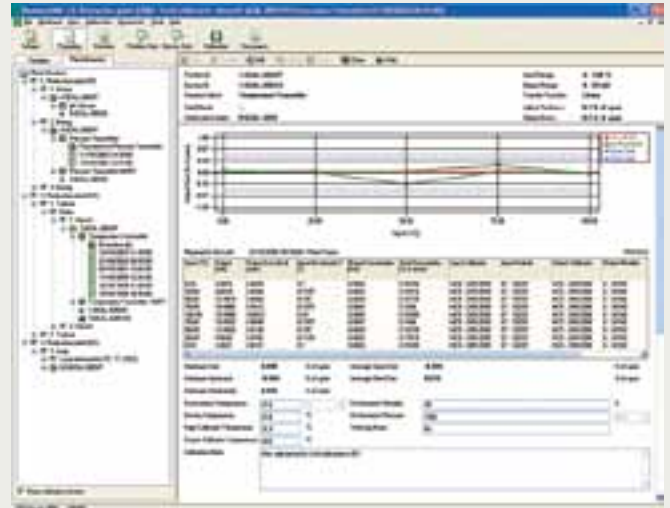
All the necessary features in a standard package

1,000-position database. The database in CMX Light holds up to 1,000 positions.

License for a single workstation. CMX Light is ideal software for companies who need calibration software that is installed and used in a single workstation.

Manual data entry. Manual data entry really expands the possibilities of CMX Light. With manual data entry, CMX Light can be used for managing, scheduling and documenting many types of calibration quantities and equipment information that is being used at the plant.

Royalty-free SQL server database. SQL Server 2005 Express Edition is a free (no separate SQL Server 2005 licenses required), easy-to-use, lightweight, and embeddable version of SQL Server 2005. It's easy to use, robust and an inexpensive way to build your calibration database.



Manage all your calibration assets – automatically

Position, device and calibrator database. CMX tracks positions, devices and their functions and calibration procedures, storing and maintaining the complete history of performed calibration tasks. No need to remember tasks, the system automatically alerts you when defined objects require recalibration and also guides the user through the entire calibration procedure from start to finish.

Position and device sets. Create and maintain position and device sets (also known as workflows or routes). Static sets assist users in planning calibration tasks and working with a certain group of positions and devices instead of reviewing the entire database.

Wizard for database population. Database Wizard guides you in creating new positions, devices and their functions and calibration procedures.

Plant structure. The multidimensional plant structure in CMX Light is similar to your real plant structure with uninstalled, installed and spare devices with multiple procedures and work orders. Managing even complicated plant structure is easy.

User accounts, groups and permissions. For security purposes, you can create user accounts, user groups and permissions to different levels.

Automated procedures. CMX Light's automated calibration procedures make calibration management efficient, fast and repeatable. Automated procedures minimize mistakes compared to manual methods of calibration management.

Paperless calibration for increased productivity

Standard calibration certificates, reports and labels.

CMX Light comes with a selection of ready-made standard calibration reports and certificates. They can all be saved in various types of electronic format (e.g. Word, HTML, .jpg, .bmp, PDF, Excel). CMX Light allows you to create all of your calibration certificates and reports conveniently, without pen and paper, and store them in the CMX database.

Paper documenting.

If you want to print and store paper copies of calibration certificates, reports, route lists and other documents, just simply drag and drop a work order to a local or network printer.

Adapts to your needs

Easy installation.

CMX Light is installed into a single workstation. The entire process is quick and easy; just follow the instructions in the CMX Installation Guide and you can begin software-based calibration management with CMX Light in no time.

Seamless communication with Beamex calibrators

Beamex calibrator support.

CMX Light supports all Beamex's documenting field calibrators and workstations. These include MC5 Multifunction Calibrator, MC5-IS Multifunction Calibrator and MCS100 Calibration Workstation. CMX Light's calibrator support offers seamless downloads and uploads between the calibrator and the software.



Feature comparison of the CMX product family

CMX Product features	Light	Professional	Enterprise
Positions/Tags in the database	300	1000	Unlimited
Optional 5 000 positions/tags in the database		○	
Optional 10 000 positions/tags in the database		○	
Single workstation license	●	●	
Floating server licenses		○	●
Networking/multi-user support		●	●
Position/Tag and Device database	●	●	●
Position/Tag and Device sets	●	●	●
Calibrator database	●	●	●
Wizard for database population	●	●	●
Communication with Beamex calibrators	●	●	●
Manual data entry	●	●	●
Average and uncertainty calculation		●	●
Plant structure	●	●	●
User accounts, groups and permissions	●	●	●
Pickup lists	●	●	●
Saveable filters		●	●
Standard paper reporting templates	9	17	17
Importing/Exporting paper reporting templates		●	●
SQL Server 2005 Express database	●	●	●
SQL Server 2005 Express database tools		●	●
CMX Database Manager tool	●	●	●
Document manager	●	●	●
Multilanguage support	●	●	●
Site User Maintenance		●	●
User Defined Transfer Functions		●	●
Oracle database support		○	●
Communication with 3 rd -party calibrators		○	○
Configurable user interface		○	●
History Trend		○	●
Report Design		○	●
Pocket PC interface		○	●
Change Management		○	●
Weighing instrument support		○	●
Lightweight Directory Access Protocol (LDAP) support		○	●
CMX connector for SAP®		○	●
CMX connector for Maximo®		○	●
Configurable CMX connector for other software			○
Integration service to other software			○
Software Service Agreement (SSA)		○	○
Factory Type Validation – URS/FDS/IQ/OQ/PQ		○	●
On-site installation and user training (3 days)		○	●
QD3 database conversion (1 database)		○	●
QM6 database conversion (1 database)		○	●
Third-party database conversion		○	○
Report designing service		○	○
On-site validation service		○	○

● = Standard feature

○ = Optional feature

Related products and services

Portable calibrators

Beamex's range of portable MC-calibrators for field calibration is known for their accuracy, versatility and also for meeting both high and uncompromised quality standards. CMX Light has built-in communication with Beamex's documenting calibrators.

Workstations

A workstation can be considered ideal when most of the maintenance and calibration tasks are performed in the workshop. Beamex's workstation is a modular testing and calibration system designed for use in workshops and laboratories.

Professional Services

An essential part of a complete calibration solution are our Professional Services: – service and re-calibration, implementation and training, software support, validation services and integration services. Working with you step-by-step, from implementation to support and re-calibration, Beamex's Professional Services help you to get the most from your calibration investment.



The Complete CMX Product Family

Choose the calibration software that best meets your needs.

CMX Light

Easy-to-use calibration software for a single workstation.

- Quick and easy start-up software.
- For a single workstation.
- Database for 1,000 positions.
- Wizard for easy database population.
- Communication with Beamex calibrators.
- Manual data entry of calibration results.
- Paper documentation includes standard certificates, reports and labels.

CMX Professional

Calibration software with wide customization possibilities.

- Database for 1,000, 5,000 or 10,000 positions.
- Installation options for a network server or workstation.
- New option for weighing instruments.
- Other options: History Trend, Pocket PC Interface, Document Design, Change Management, etc.
- Interface option for SAP® and Maximo®.
- Optional Software Service Agreement offers automatic software upgrades.
- Beamex's Help Desk services.

CMX Enterprise

All-in-one calibration solution for large companies.

- Enterprise includes features, such as History Trend, Report Design, Pocket PC Interface, Change Management and Calibration of Weighing Instruments.
- One floating installation for the corporate server for sharing the same system in all locations worldwide.
- Database with unlimited number of positions.
- Optional, configurable interfacing with other software systems.
- Optional Software Service Agreement offers automatic software upgrades.



w w w . b e a m e x . c o m

Portable calibrators

Workstations

Calibration software

Professional services

Industry solutions

For more information, please visit www.beamex.com or contact info@beamex.com