



VT100

BODY-WORN CAMERA FOR LOCAL GOVERNMENT



THE VT100 SOLUTION

The VT100 body-worn camera is an essential piece of equipment for local government workers.

Its presence can help to de-escalate confrontational situations, and if a prosecution becomes necessary, its footage can provide clear evidence to protect your team against false accusations.

It is ideal for code enforcement officers, meter readers, animal welfare investigators and bus drivers - both to provide protection, and to record evidence of compliance.

The camera is equipped with a range of security features to protect staff and preserve citizen privacy. It is lightweight and can easily be attached to any uniform using a variety of mounting options.

INTEGRATED SOLUTION

Motorola Solutions offers a suite of equipment that enables effective and efficient use of body-worn cameras; fitting seamlessly into a local government worker's daily routine.

The VT100 captures indisputable recorded evidence, which is securely offloaded to VideoManager, allowing incidents to be stored, shared and managed centrally. In addition, the VT100 complements your VMS installation, providing the ability to view body-worn camera footage alongside that captured on fixed video security cameras.

LOCAL GOVERNMENT WORKER USE CASE

RFID

STEP 1: ASSIGNING THE CAMERA

The worker scans their RFID card at the start of their shift. The VideoManager system assigns a VT100 body-worn camera to the worker, which identifies itself in the docking station with a solid red LED. From this point on, all footage captured on the VT100 will be assigned to the worker.



STEP 4: RETURNING THE CAMERA

At the end of the shift, the worker returns the VT100 to its docking station. All stored footage is offloaded to VideoManager, and erased from the camera. The VT100 is un-assigned from the worker, and its battery is charged.



STEP 2: WEARING THE CAMERA

The worker wears the VT100 throughout their shift. The camera will be in standby mode, and will not record unless it is triggered. It is lightweight and can be easily attached to most types of uniform.



STEP 5: REVIEWING THE FOOTAGE

The video files are stored securely within the VideoManager software system, ready for an authorized user to review. Optionally, the footage can be reviewed on the VMS system, alongside associated footage from fixed security cameras.



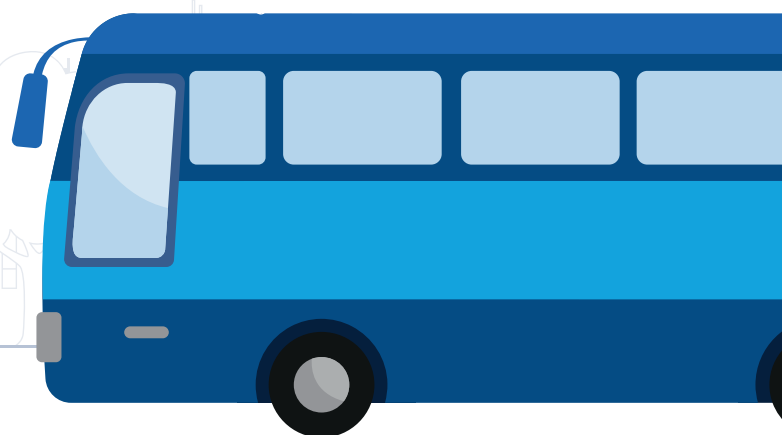
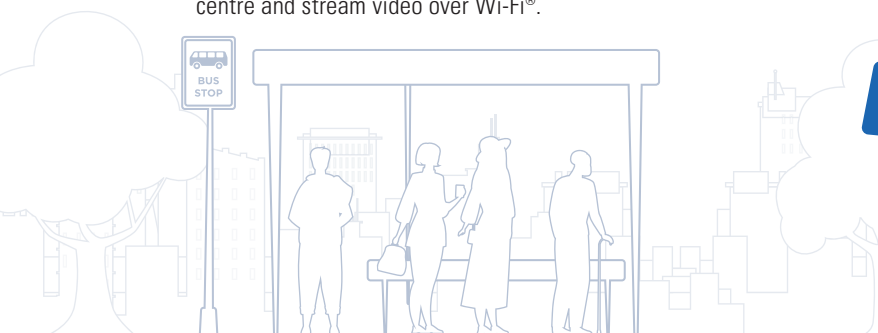
STEP 3: RESPONDING TO AN INCIDENT

If the worker becomes involved in an escalated situation that cannot be quickly resolved, they warn the member of the public that they are activating their body-worn camera. Recording is activated by pressing the record button on the VT100, resulting in video and audio being immediately captured. Optionally it can trigger an alert at the security centre and stream video over Wi-Fi®.



STEP 6: TAGGING AS EVIDENCE

Footage can be tagged as evidence for future use or for training purposes. It will be retained as an 'incident' and all other footage will be systematically deleted as required. Incidents can be audited centrally, and securely shared.



VIDEOMANAGER

ADVANCED MEDIA, DEVICE AND USER MANAGEMENT SOFTWARE

All footage captured by VT100 cameras is offloaded to VideoManager, and can be accessed by authorized personnel by securely logging in from any computer or tablet connected to the network.

VideoManager provides the ability to assign user profiles, meaning granted permissions within the system can be controlled by role, and audit logs let you track every user action, ensuring traceability and transparency. Two-Factor Authentication protects against unauthorized user access while Access Control Keys stop unauthorized devices connecting to the system. VideoManager allows secure remote access, and provides links for secure sharing with external agencies.

HARDWARE

This complete body-worn camera solution allows managers to review footage, monitor camera usage and review recorded incidents from any location. The following list of hardware is recommended for a city-wide system roll-out. Please note that a software licence is required in addition to the following hardware.

VT100 SOLUTION FOR LOCAL GOVERNMENT

VT100 Camera(s) and Mounts

14-Port Dock (1 for Every 14 Cameras)

DockController (1 for Every 6 Docks)

MicroServer (1)

RFID Reader

PC Situated Within the Network for Footage Review

Optional Customized ID Card

Optional Lanyard



For more information, please visit: www.motorolasolutions.com/vt100



Motorola Solutions, Inc. 500 West Monroe Street, Chicago, IL 60661 U.S.A. motorolasolutions.com

MOTOROLA, MOTO, MOTOROLA SOLUTIONS and the Stylized M Logo are trademarks or registered trademarks of Motorola Trademark Holdings, LLC and are used under license. All other trademarks are the property of their respective owners. © 2020 Motorola Solutions, Inc. All rights reserved. (07/20) (ED-004-015-005-US)