

## Model 23 Medium Power Fixed Coaxial Attenuator

dc to 18.0 GHz  
10 Watts

**Bi-directional Design!**



### Features

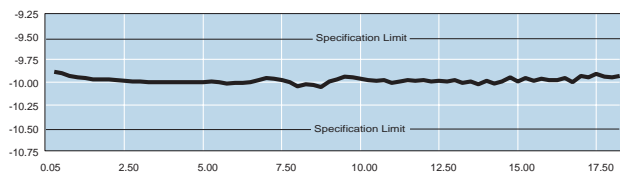
- /// Precision injection molded connector dielectric.
- /// Designed to meet environmental requirements of MIL-A-3933.

### Specifications

**NOMINAL IMPEDANCE:** 50 Ω

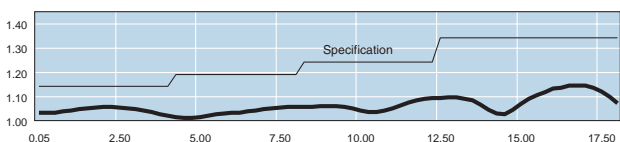
**FREQUENCY RANGE:** dc to 18.0 GHz

MAXIMUM DEVIATION OVER FREQUENCY:	
Nominal ATTN (dB)	Deviation (dB)
1, 2	± 0.50
3, 6	± 0.30
10, 20	± 0.50
30, 40	± 1.00
50	± 1.25
60	± 1.50



Typical Attenuation Accuracy of a 23-10-34

MAXIMUM SWR:	
Frequency (GHz)	SWR
dc - 4	1.15
4 - 8	1.20
8 -12.4	1.25
12.4 - 18	1.35



Typical SWR of a 23-10-34

**POWER RATING (mounted horizontally):** 10 watts **average (bi-directional)** to 25°C ambient temperature, derated linearly to 1 watts @ 125°C. Note: 1, 2, 3 dB models can handle 20 Watts **average (bi-directional)**. 1 kilowatt **peak** (5 μsec pulse width; 0.5% duty cycle).

**POWER COEFFICIENT:** <0.0015 dB/dB/watt

**TEMPERATURE COEFFICIENT:** <0.0004 dB/dB/°C

**TEMPERATURE RANGE:** -55°C to 125°C

**TEST DATA:** Insertion loss test data supplied at 0.05, 4.0, 8.0, 12.0, and 18.0 GHz. Other test data can be provided at additional cost.

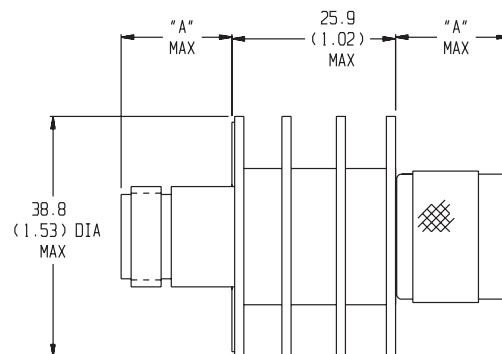
**CONNECTORS:** Type N connectors per MIL-STD-348 interface dimensions - mate nondestructively with MIL-C-39012 connectors.

Connector Options	Type/Description
3	Type N, Female
4	Type N, Male

**CONSTRUCTION:** Black, finned aluminum body, gold plated beryllium copper contacts.

**WEIGHT:** 110 g (4 oz.) maximum

**PHYSICAL DIMENSIONS:**

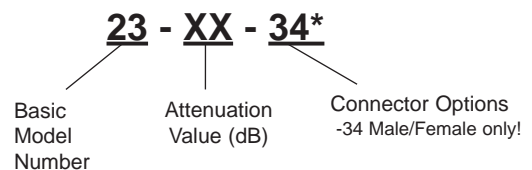


Connector	DIM A
N Male	24.1 (0.95)
N Female	19.1 (0.75)

NOTE: All dimensions are given in mm (inches) and are maximum, unless otherwise specified.

### MODEL NUMBER DESCRIPTION:

Example:



\* Unit is bi-directional and full power may be applied to either J1 or J2.